



SERIES: PRY2 | DESCRIPTION: POWER RELAY

FEATURES

- Class F
- 10 A
- epoxy sealed

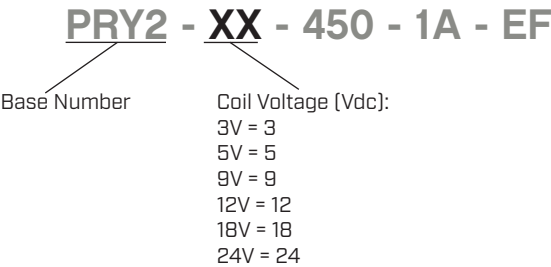


MODEL

	coil voltage typ [Vdc]	coil resistance [Ω±10%]	operating voltage min [Vdc]	release voltage max [Vdc]	coil power typ [mW]
PRY2-3V-450-1A-EF	3	20	2.25	0.15	450
PRY2-5V-450-1A-EF	5	56	3.75	0.25	450
PRY2-9V-450-1A-EF	9	180	6.75	0.45	450
PRY2-12V-450-1A-EF	12	320	9.0	0.6	450
PRY2-18V-450-1A-EF	18	720	13.5	0.9	450
PRY2-24V-450-1A-EF	24	1,280	18	1.2	450

- Notes:
1. Maximum voltage is 130% of nominal voltage.
 2. Coil temperature rise 70 K max.
 3. All specifications are measured at 23°C unless otherwise specified.

PART NUMBER KEY



CONTACT SPECIFICATIONS

parameter	conditions/description	min	typ	max	units
contact form	1 Form A				
contact material	Ag alloy				
contact rating	10 A @ 250 Vac				
contact resistance	at 6 Vdc, 1.0 A			100	mΩ
contact temperature rise				70	K
max switching voltage				250 30	Vac Vdc
max switching current				10	A
max switching power				2,500 300	VA W
min switching load	5 Vdc, 100 mA				
life	electrical: at 250 Vac/5 A, 1 second on, 9 seconds off mechanical: 0.1 seconds on, 0.1 seconds off	100,000 10,000,000			operations operations

GENERAL SPECIFICATIONS

parameter	conditions/description	min	typ	max	units
insulation resistance	at 500 Vdc	1,000			MΩ
dielectric strength	between open contacts for 1 minute between coil and contacts for 1 minute		1,000 4,000		Vac Vac
coil insulation system	Class F				
operate time				10	ms
release time				5	ms
shock resistance	endurance: 3 shocks in each XYZ direction for 6 ms misoperation: 3 shocks in each XYZ direction for 11 ms		1,000 100		m/s ² m/s ²
vibration resistance	endurance: 10~55 Hz, 1.5 mm double amplitude for 2 hours misoperation: 10~55 Hz, 1.5 mm double amplitude for 5 minutes				
operating temperature		-40		105	°C
humidity		45		85	%RH
weight			5.5		g
safety approvals	UL/cUL 508				
flammability rating	UL94V-0				
RoHS	yes				
packaging	carton size: 230 x 215 x 170 mm carton QTY: 1,000 pcs per carton				

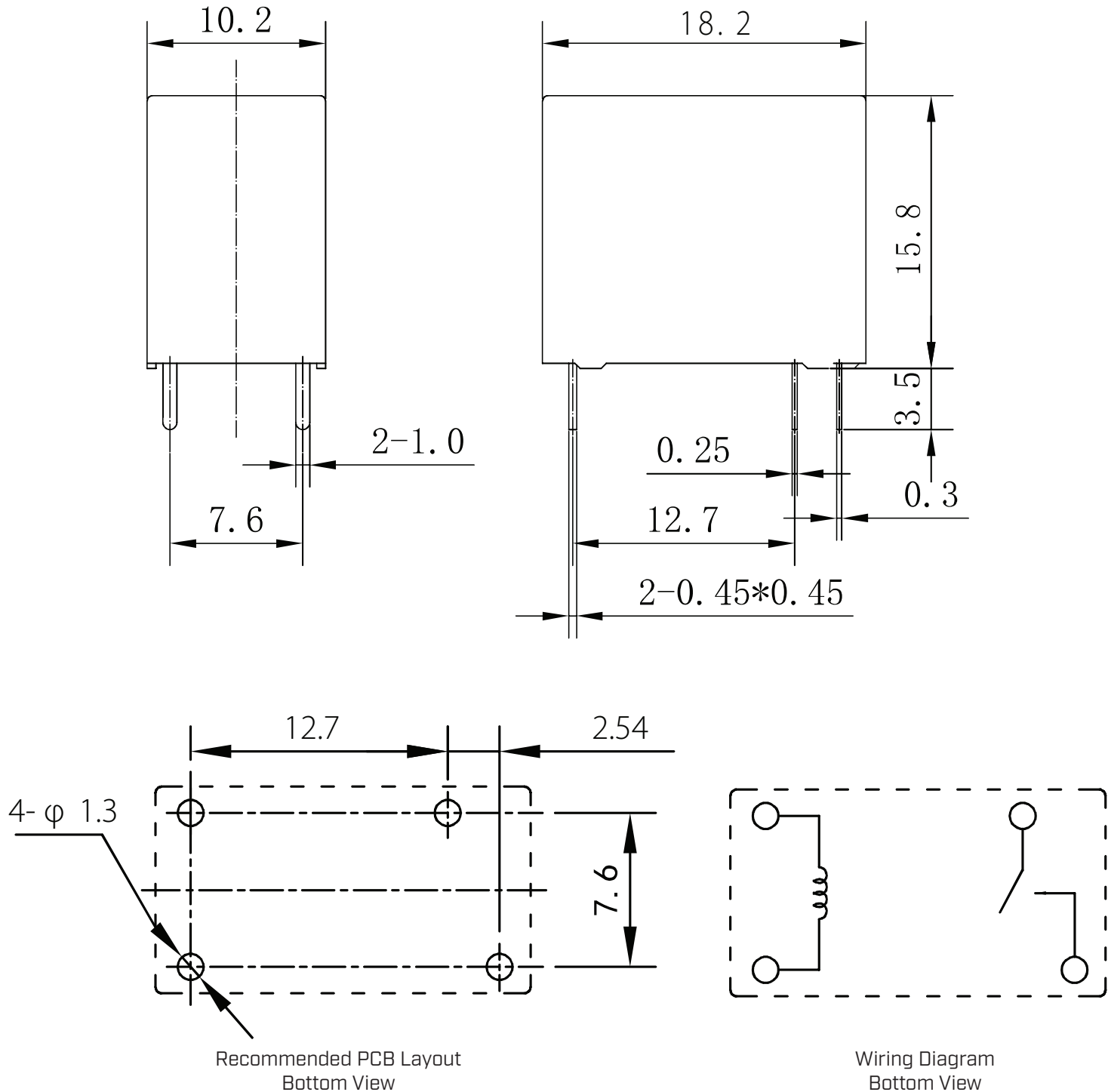
SOLDERABILITY

parameter	conditions/description	min	typ	max	units
wave soldering	for 10±1 seconds	255	260	265	°C

MECHANICAL DRAWING

units: mm
tolerance:
X≤1: ±0.20 mm
1<X≤5: ±0.3 mm
X>5 mm: ±0.4 mm
PCB: ±0.10 mm
unless otherwise noted

DESCRIPTION	MATERIAL	PLATING/COLOR
housing	PBT [UL94V-0]	black
terminals	copper alloy	tin
coil terminals	enameled wire	



REVISION HISTORY

rev.	description	date
1.0	initial release	07/03/2025

The revision history provided is for informational purposes only and is believed to be accurate.



Same Sky offers a one (1) year limited warranty. Complete warranty information is listed on our website.

Same Sky reserves the right to make changes to the product at any time without notice. Information provided by Same Sky is believed to be accurate and reliable. However, no responsibility is assumed by Same Sky for its use, nor for any infringements of patents or other rights of third parties which may result from its use.

Same Sky products are not authorized or warranted for use as critical components in equipment that requires an extremely high level of reliability. A critical component is any component of a life support device or system whose failure to perform can be reasonably expected to cause the failure of the life support device or system, or to affect its safety or effectiveness.

sameskydevices.com