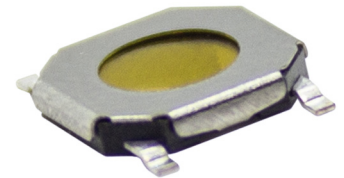


**SERIES:** TS42 | **DESCRIPTION:** TACTILE SWITCH**FEATURES**

- ultra thin
- 160, 260 & 350 gf

**SPECIFICATIONS**

parameter	conditions/description	min	typ	max	units
rated voltage		1		12	Vdc
rated current		0.01		50	mA
withstanding voltage	for 1 minute		250		Vac
contact resistance	applying load of 2 times operating force at 5 Vdc, 10 mA			100	mΩ
insulation resistance	at 100 Vdc for 1 minute	100			MΩ
operating force	160 gf model	110	160	210	gf
	260 gf model	190	260	330	gf
	350 gf model	260	350	440	gf
return force		20			gf
actuator travel		0.10	0.20	0.30	mm
operating temperature		-30		80	°C
storage temperature		-40		90	°C
life	5 Vdc, 5 mA, 2 cycles/second, 1.5 times operating force				
	160 & 260 gf models		80,000		cycles
	350 gf model		100,000		cycles
vibration	10~55~10 Hz, 1.5 mm amplitude, 2 hours on each XYZ				
flammability rating	see material table				
RoHS	yes				

PART NUMBER KEY**TS42 - 5252 - 09 - Y - XXX - SMT - TR**

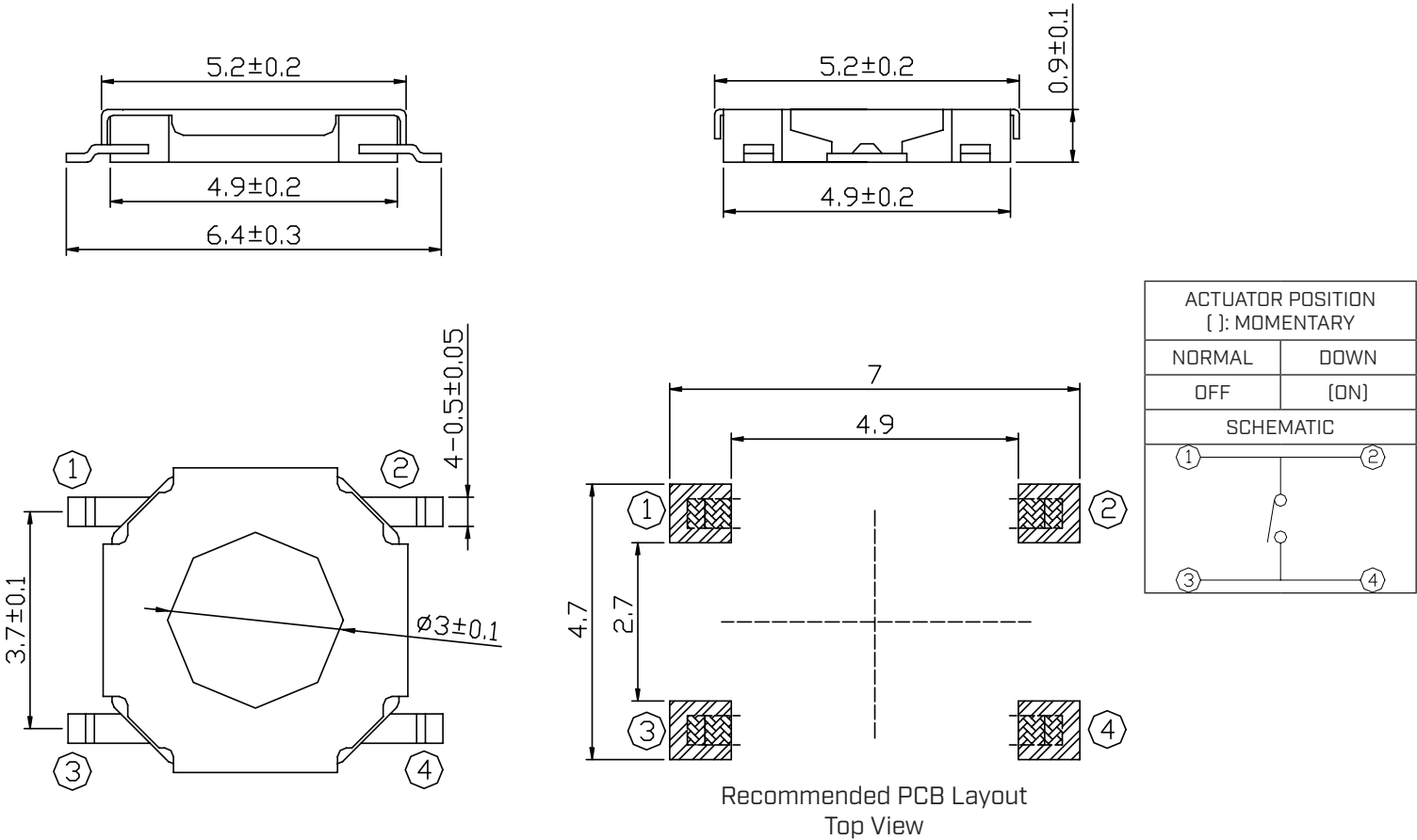
Base Number

Push Force:
160 = 160 gf
260 = 260 gf
350 = 350 gf

MECHANICAL DRAWING

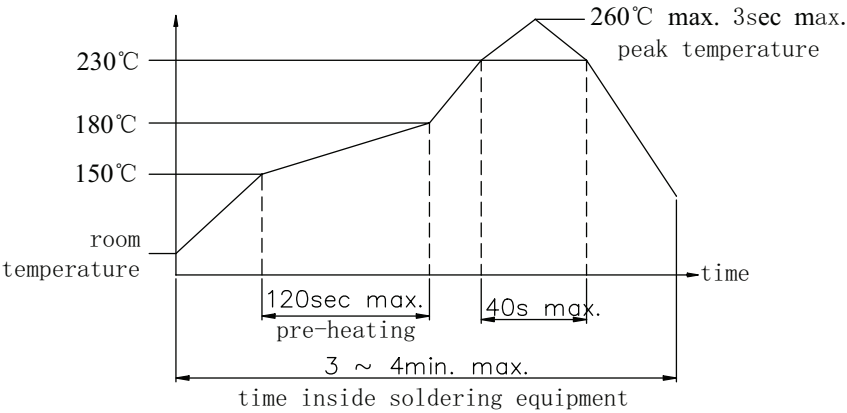
units: mm
tolerance: ± 0.2 mm
unless otherwise noted

DESCRIPTION	MATERIAL	PLATING/COLOR
terminals	phosphor copper	silver
housing	PA6T [UL94HB]	black
contacts	SUS	silver
cover	SUS	--
film	PI	yellow



SOLDERABILITY

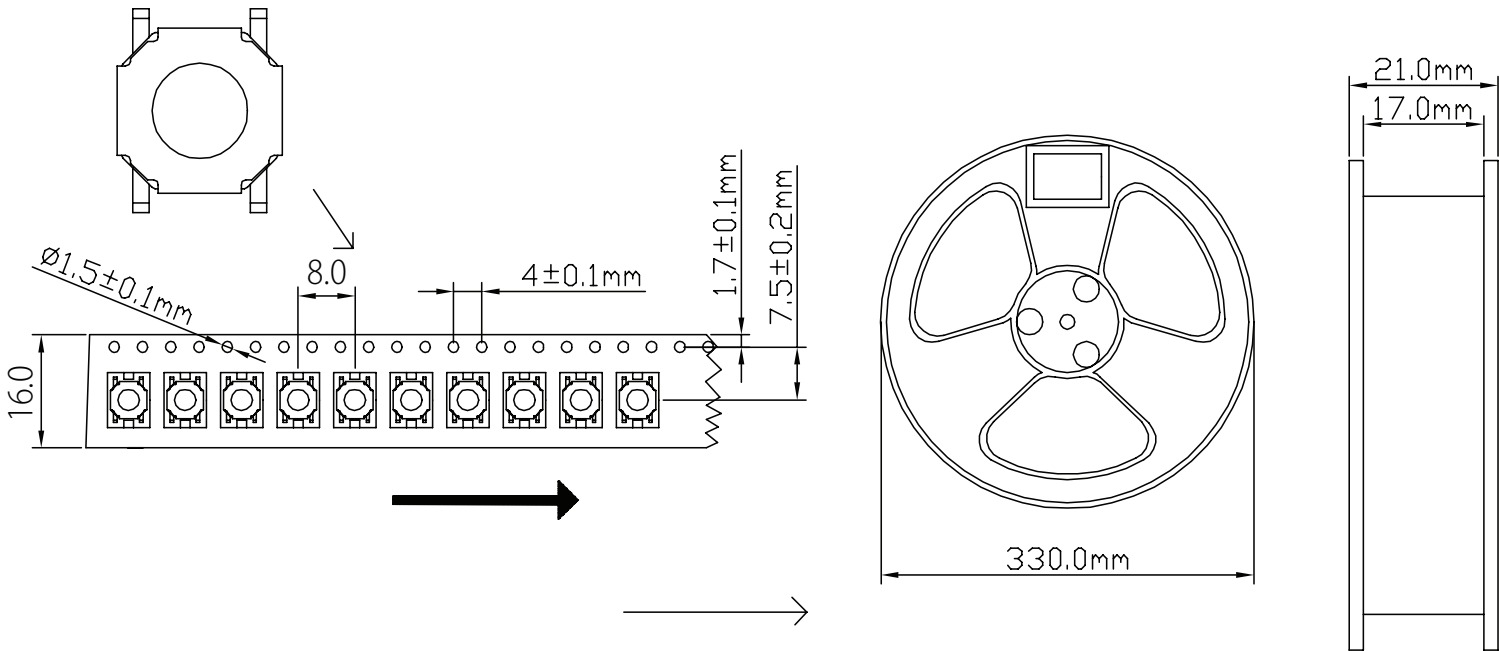
parameter	conditions/description	min	typ	max	units
hand soldering	for maximum 3 seconds			350	°C
reflow soldering	see reflow profile			260	°C



PACKAGING

units: mm

Reel Size: Ø330 mm
Reel QTY: 4,000 pcs per reel



REVISION HISTORY

rev.	description	date
1.0	initial release	11/20/2025

The revision history provided is for informational purposes only and is believed to be accurate.



Same Sky offers a one (1) year limited warranty. Complete warranty information is listed on our website.

Same Sky reserves the right to make changes to the product at any time without notice. Information provided by Same Sky is believed to be accurate and reliable. However, no responsibility is assumed by Same Sky for its use, nor for any infringements of patents or other rights of third parties which may result from its use.

Same Sky products are not authorized or warranted for use as critical components in equipment that requires an extremely high level of reliability. A critical component is any component of a life support device or system whose failure to perform can be reasonably expected to cause the failure of the life support device or system, or to affect its safety or effectiveness.

sameskydevices.com