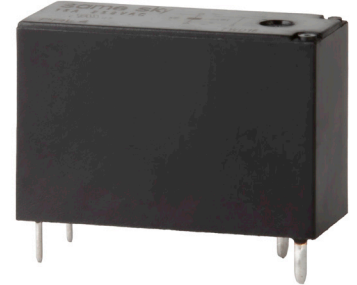


**SERIES:** PRL4 | **DESCRIPTION:** LATCHING POWER RELAY**FEATURES**

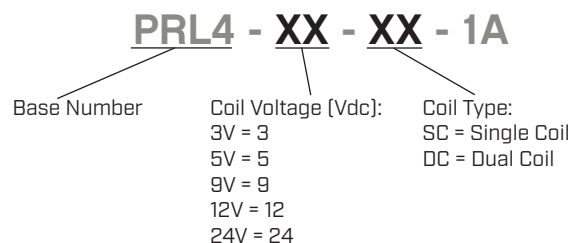
- single coil
- double coil
- 1 form A

**MODEL**

| | coil voltage typ [Vdc] | coil resistance [Ω±10%] | operating voltage min [Vdc] | reset voltage min [Vdc] | coil power typ [mW] |
|----------------|---------------------------------|-----------------------------------|--------------------------------------|----------------------------------|------------------------------|
| PRL4-3V-SC-1A | 3 | 45 | 2.4 | 2.4 | 200 |
| PRL4-5V-SC-1A | 5 | 125 | 4 | 4 | 200 |
| PRL4-9V-SC-1A | 9 | 405 | 7.2 | 7.2 | 200 |
| PRL4-12V-SC-1A | 12 | 720 | 9.6 | 9.6 | 200 |
| PRL4-24V-SC-1A | 24 | 2880 | 19.2 | 19.2 | 200 |
| PRL4-3V-DC-1A | 3 | 22.5/22.5 | 2.4 | 2.4 | 400 |
| PRL4-5V-DC-1A | 5 | 62.5/62.5 | 4 | 4 | 400 |
| PRL4-9V-DC-1A | 9 | 202.5/202.5 | 7.2 | 7.2 | 400 |
| PRL4-12V-DC-1A | 12 | 360/360 | 9.6 | 9.6 | 400 |
| PRL4-24V-DC-1A | 24 | 1440/1440 | 19.2 | 19.2 | 400 |

Notes:

1. The magnetic relay is shipped in the reset state. However, it may be in the set state due to impact of transportation or installation. Therefore, check status of the relay prior to use.
2. It is recommended to apply 1-1.3 times of rated coil voltage and the pulse width must be greater than 30 ms.
3. Do not apply voltage to the set coil and reset coil at the same time, and do not apply voltage to the coil for more than 1 minute.
4. During transportation, storage, and application, please keep the relays away from strong magnetic fields to avoid malfunction or damage.
5. All specifications are measured at 23°C unless otherwise specified.

PART NUMBER KEY

CONTACT SPECIFICATIONS

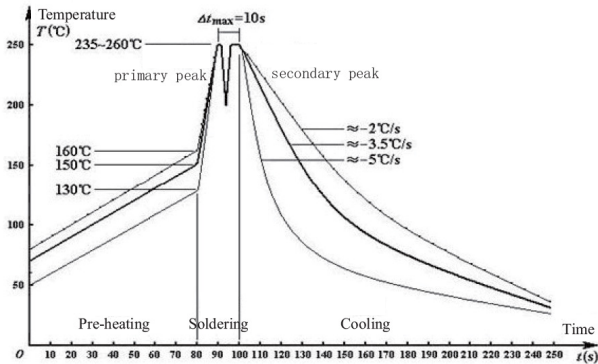
| parameter | conditions/description | min | typ | max | units |
|-----------------------|--|-----|----------------------|-------|--------------------------|
| contact form | 1 Form A | | | | |
| contact material | Ag alloy | | | | |
| contact rating | 16 A @ 250 Vac | | | | |
| contact resistance | at 6 Vdc, 1 A | | | 100 | mΩ |
| max switching voltage | | | | 277 | Vac |
| max switching current | | | | 20 | A |
| max switching power | | | | 5,000 | VA |
| min switching load | 5 Vdc, 0.1 A | | | | |
| life | electrical: 16 A, 250 Vac resistive load mechanical: at 180 operations/minute | | 100,000 1,000,000 | | operations operations |

GENERAL SPECIFICATIONS

| parameter | conditions/description | min | typ | max | units |
|-----------------------|--|-------|----------------|-----|--------------------------------------|
| insulation resistance | at 500 Vdc | 1,000 | | | MΩ |
| dielectric strength | between open contacts, 50/60 Hz for 1 minute between coil and contacts, 50/60 Hz for 1 minute | | 1,000 5,000 | | Vac Vac |
| operate time | | | | 15 | ms |
| release time | | | | 15 | ms |
| shock resistance | endurance misoperation | | 1,000 100 | | m/s ² m/s ² |
| vibration resistance | endurance: 10~55 Hz, 1.5 mm double amplitude misoperation: 10~55 Hz, 1.5 mm double amplitude | | | | |
| operating temperature | | -40 | | 85 | °C |
| humidity | at 40°C | 5 | | 85 | %RH |
| weight | | | 7 | | g |
| safety approvals | UL/cUL 508 | | | | |
| flammability rating | UL94V-0 | | | | |
| RoHS | yes | | | | |
| packaging | tube: 100 pcs per case carton size: 464 x 314 x 166 mm carton QTY: 1,000 pcs per carton | | | | |

SOLDERABILITY

| parameter | conditions/description | min | typ | max | units |
|----------------|------------------------|-----|-----|-----|-------|
| hand soldering | for 3.5±0.5 seconds | 340 | 350 | 360 | °C |
| wave soldering | for 10±1 seconds | 255 | 260 | 265 | °C |

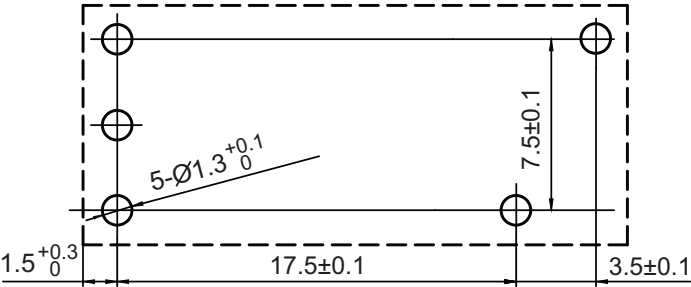
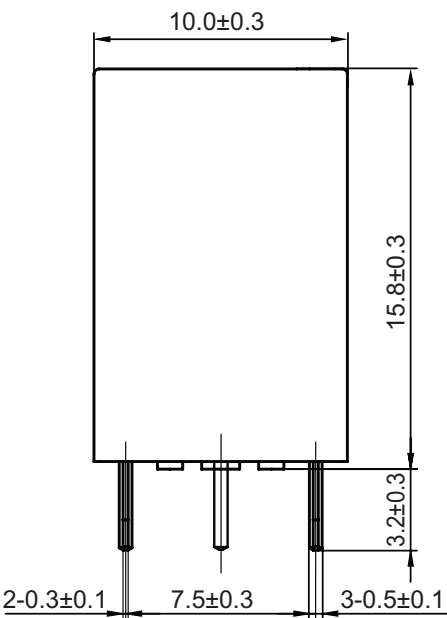
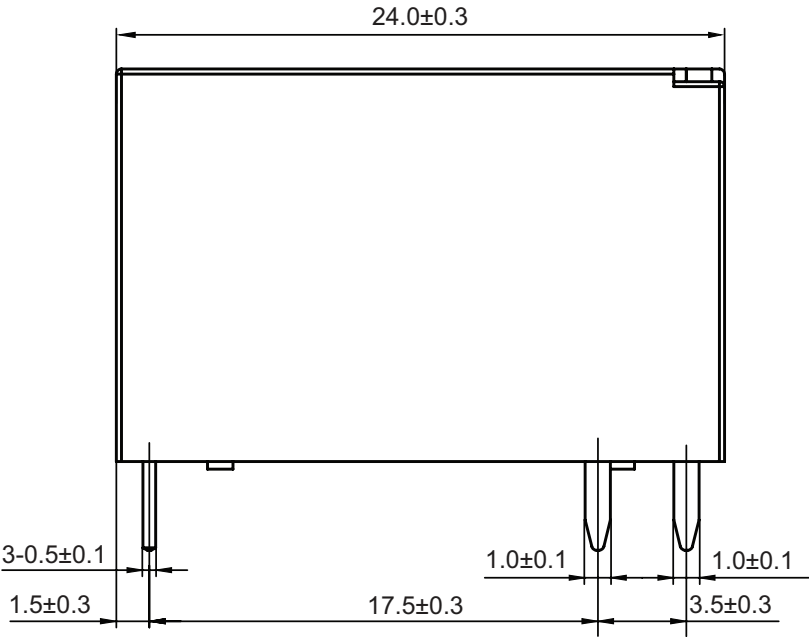


Double-wave Soldering Curve

MECHANICAL DRAWING (DOUBLE COIL)

units: mm

| DESCRIPTION | MATERIAL | PLATING/COLOR |
|-------------------|---------------|-----------------|
| housing | PBT [UL94V-0] | black |
| contact terminals | copper alloy | tin |
| coil terminals | iron | tin over copper |



Recommended PCB Layout
Bottom View



Wiring Diagram
Bottom View

REVISION HISTORY

| rev. | description | date |
|------|-----------------|------------|
| 1.0 | initial release | 05/19/2025 |

The revision history provided is for informational purposes only and is believed to be accurate.



Same Sky offers a one (1) year limited warranty. Complete warranty information is listed on our website.

Same Sky reserves the right to make changes to the product at any time without notice. Information provided by Same Sky is believed to be accurate and reliable. However, no responsibility is assumed by Same Sky for its use, nor for any infringements of patents or other rights of third parties which may result from its use.

Same Sky products are not authorized or warranted for use as critical components in equipment that requires an extremely high level of reliability. A critical component is any component of a life support device or system whose failure to perform can be reasonably expected to cause the failure of the life support device or system, or to affect its safety or effectiveness.

sameskydevices.com