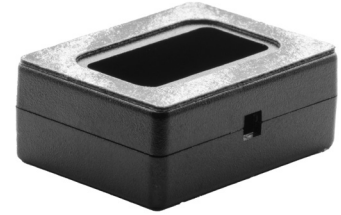




MODEL: BOX-1609-1CC | **DESCRIPTION:** PROTOTYPING TEST ENCLOSURE

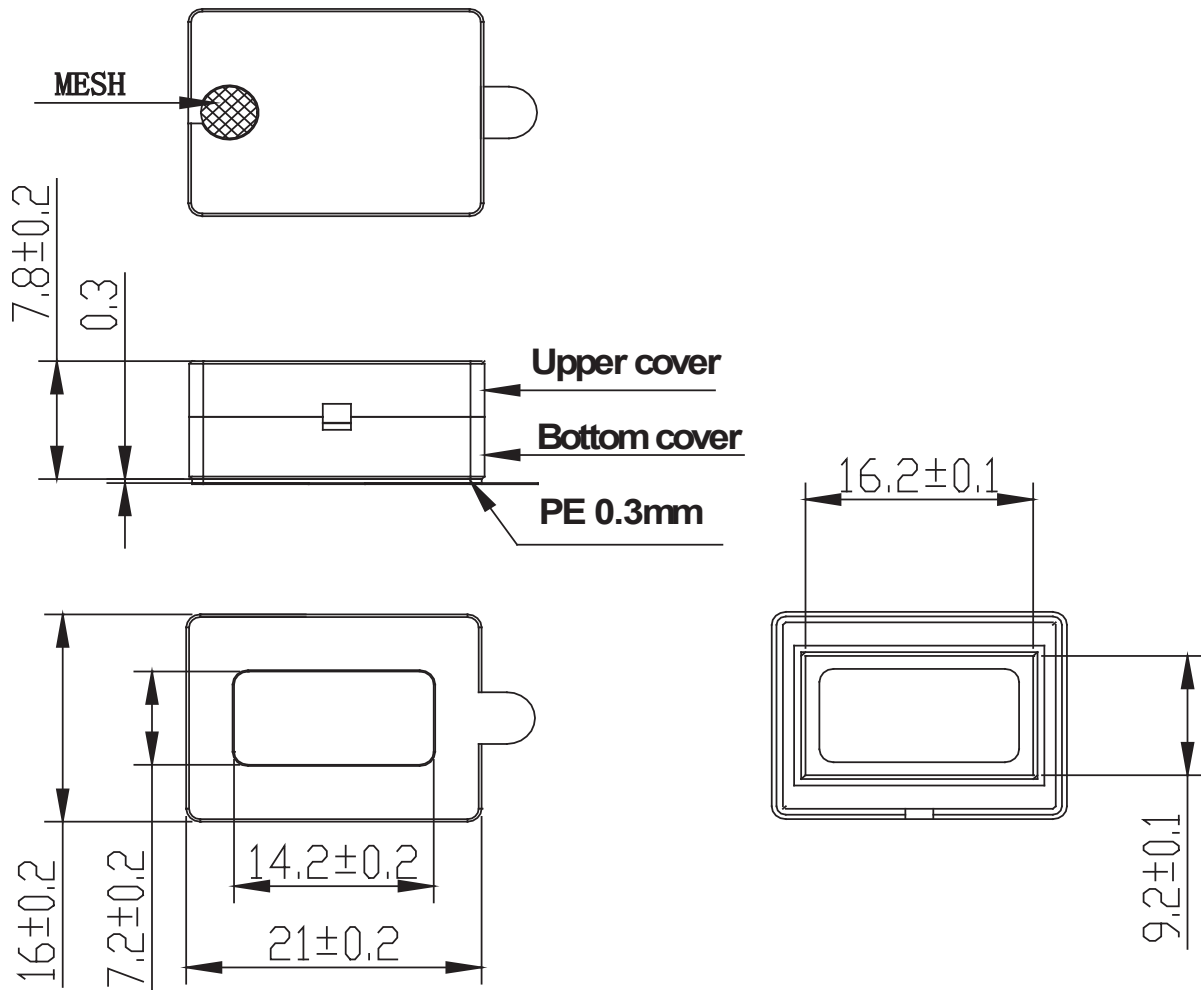
FEATURES

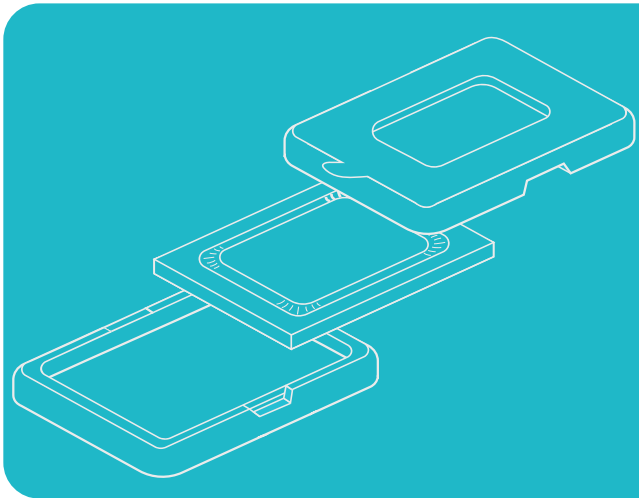
- 1 cc testing box for 16x9 mm speakers
- adhesive for speaker included
- hole for wire routing



MECHANICAL DRAWING

units: mm
tolerance: 0.2 mm
unless otherwise noted





Rear enclosures are often essential for achieving peak performance in miniature speakers. Sampling speakers that require an acoustic cavity of approximately 1 cc without an enclosure can prevent them from demonstrating their specified performance. Same Sky's speaker prototyping test enclosures are designed to address this issue by providing a controlled rear volume during evaluation.

This simple three-part system enables quick and efficient testing of miniature speakers and can also serve as a foundational building block for your final product design. For additional background and best practices on speaker enclosure design, please refer to Same Sky's blog post:

[The Critical Role of Rear Enclosures in Miniature Speakers](#)

PROTOTYPING TEST ENCLOSURE SELECTION

Utilize the following table to select the appropriate Same Sky test enclosure based on your speaker frame size.

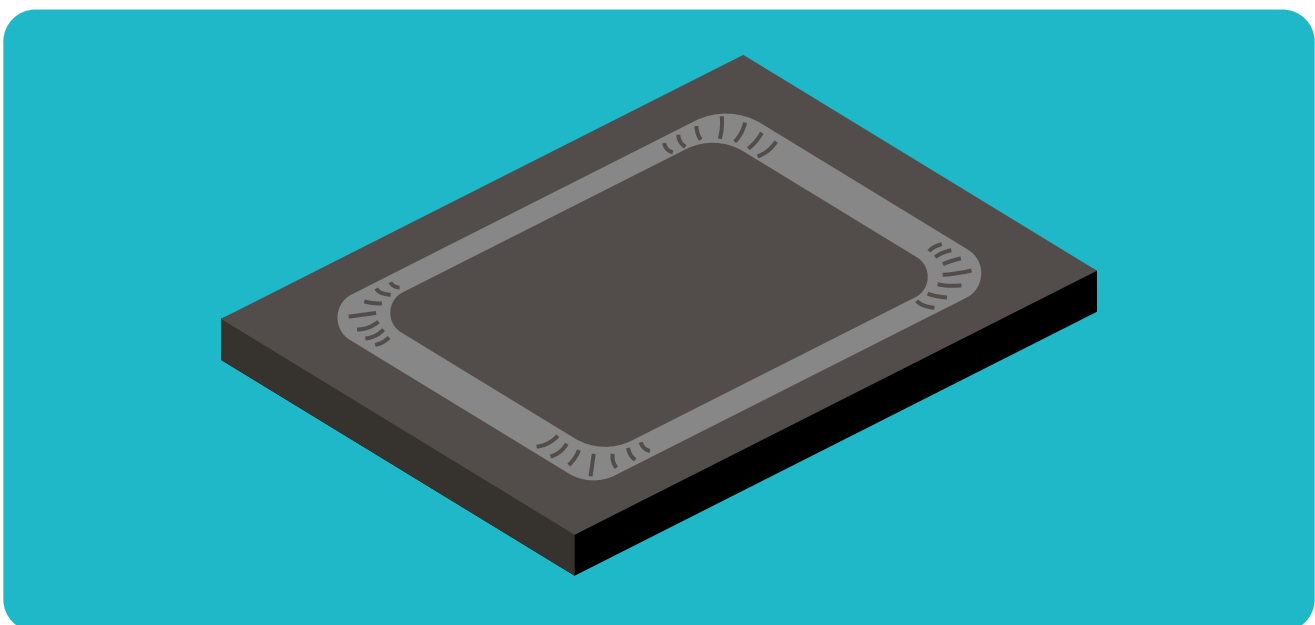
Speaker Frame Size (L x W)	15 mm x 11 mm	16 mm x 9 mm	18 mm x 13 mm
Same Sky Part Number	BOX-1511-1CC	BOX-1609-1CC	BOX-1813-1CC

PROTOTYPING TEST ENCLOSURE ASSEMBLY INSTRUCTIONS

The following steps go over the assembly process for Same Sky's speaker prototyping test enclosures.

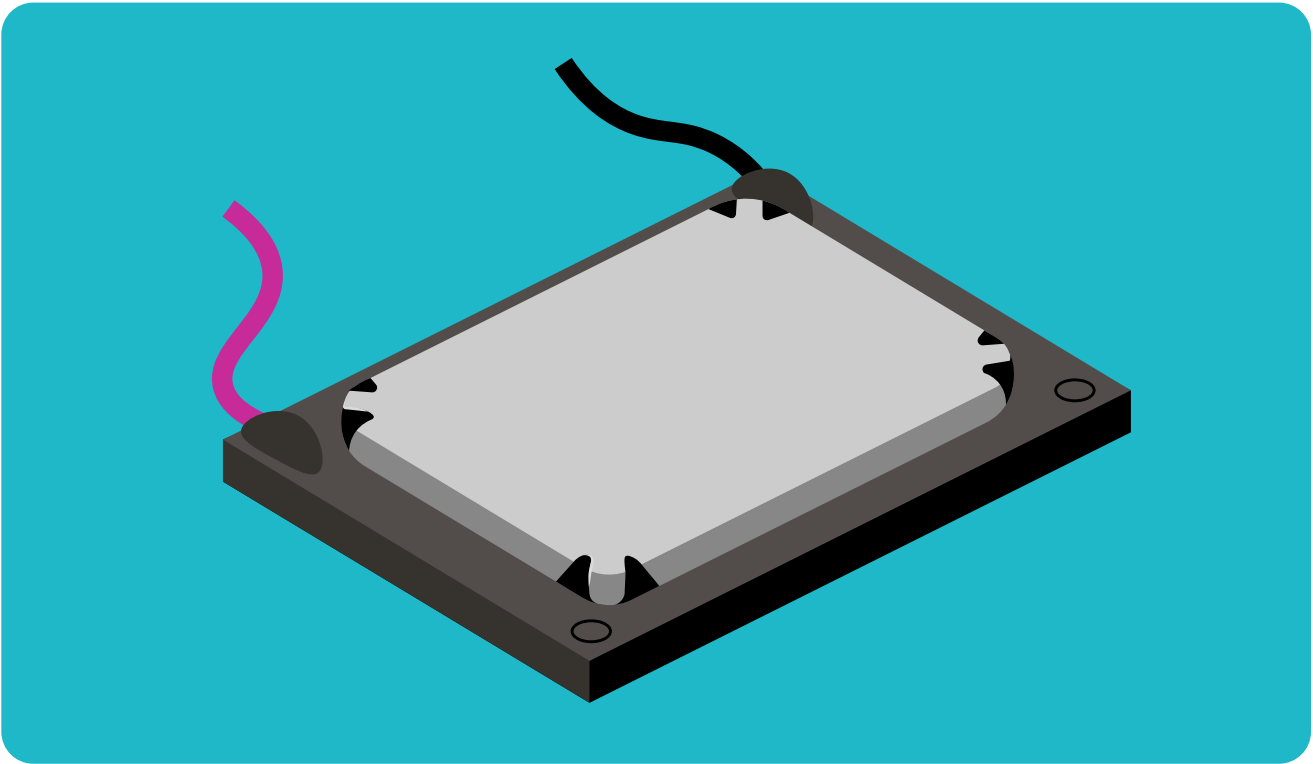
STEP 1

Prepare the speaker for assembly



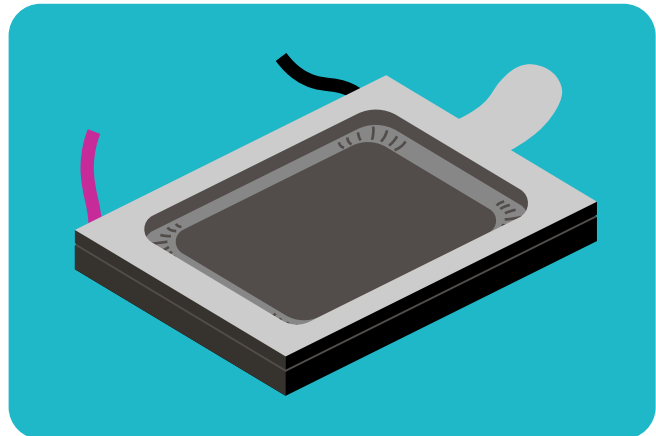
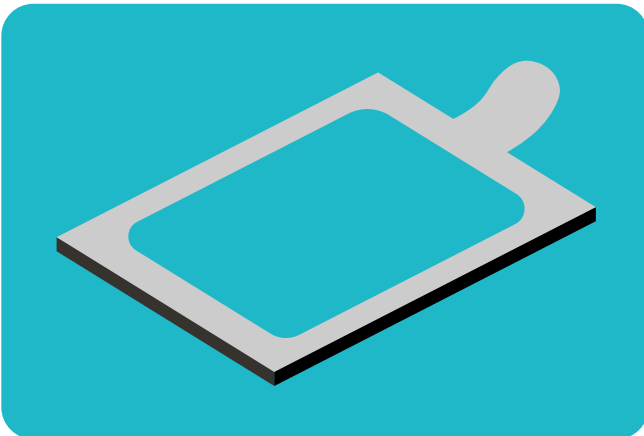
STEP 2

If using a solder pad speaker, solder the wire leads to the solder pads on the back of the speaker



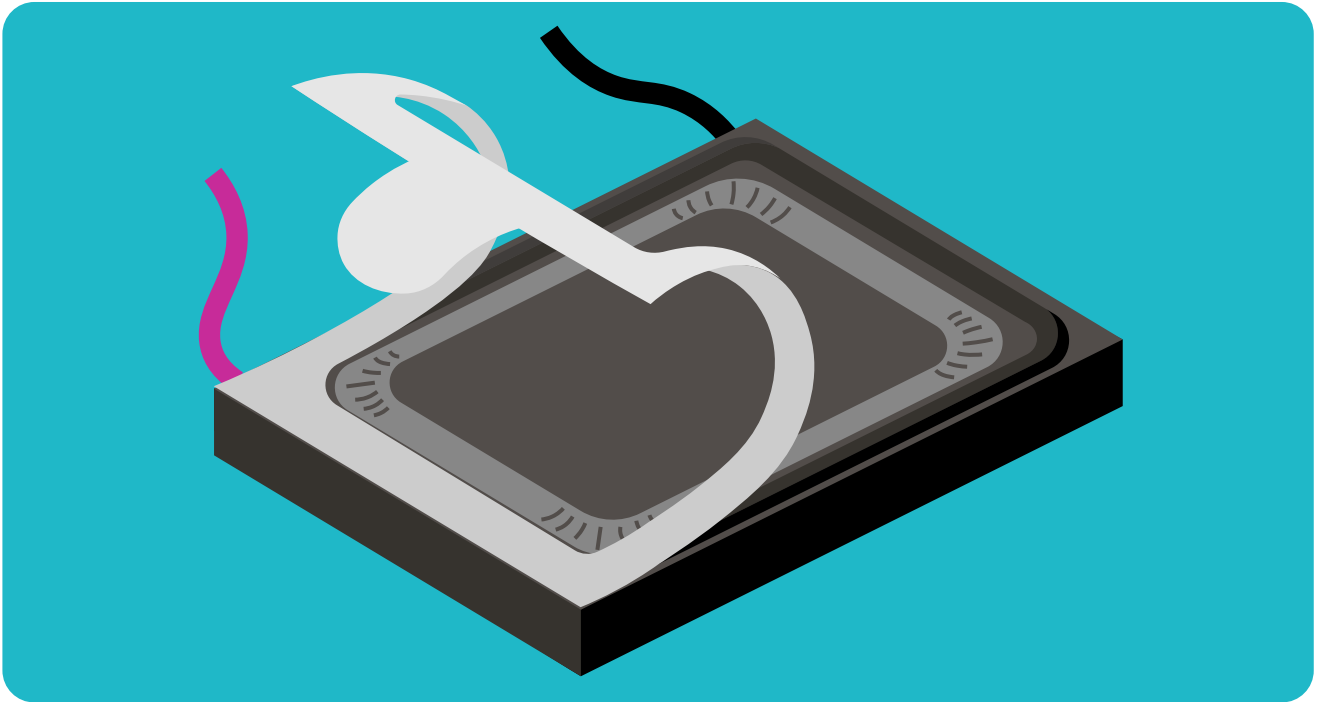
STEP 3

Prepare the double-sided adhesive foam and adhere it to the front of the speaker



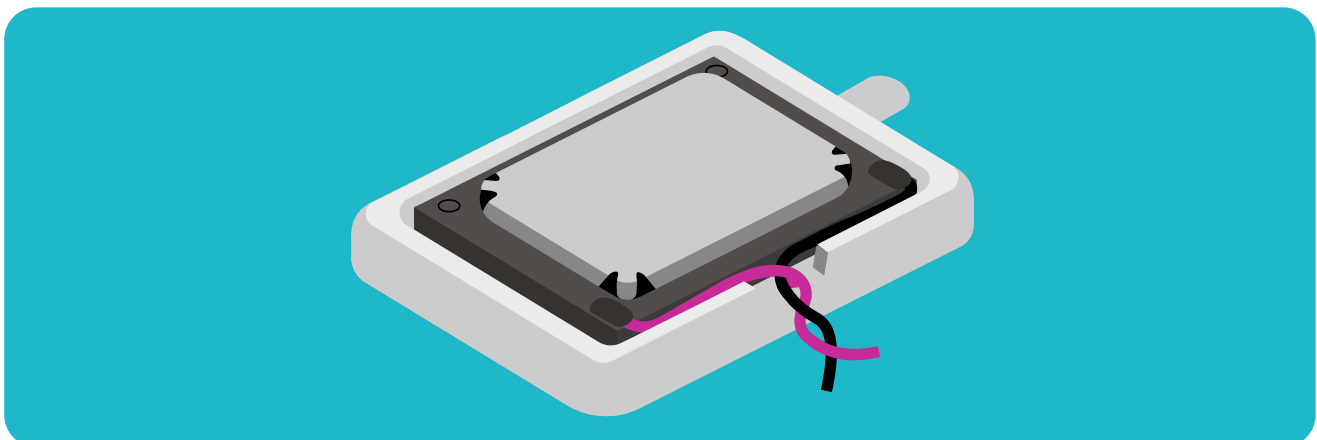
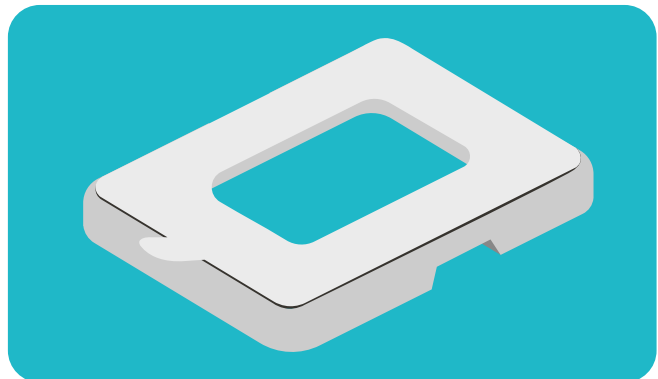
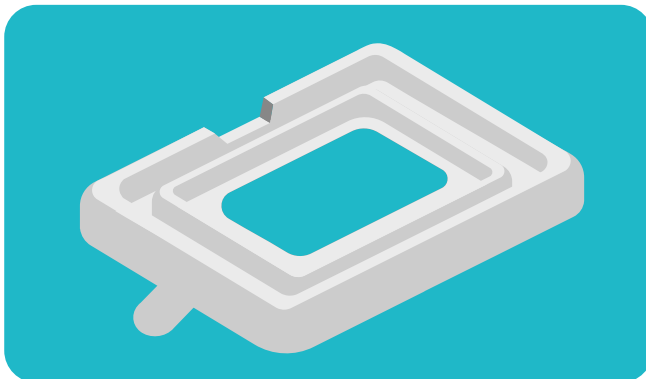
STEP 4

Once adhered to the speaker, remove the release paper from the double-sided adhesive foam



STEP 5

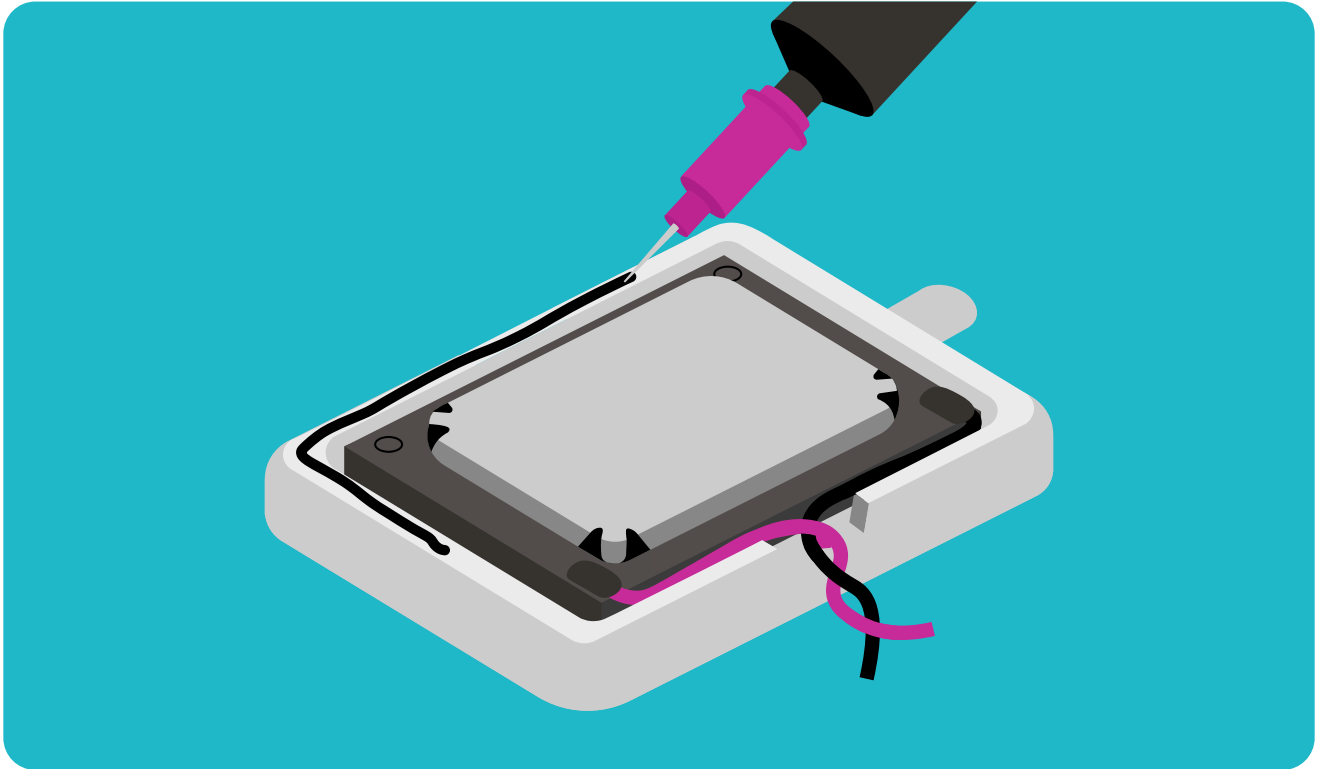
Place the speaker into the front box



STEP 6

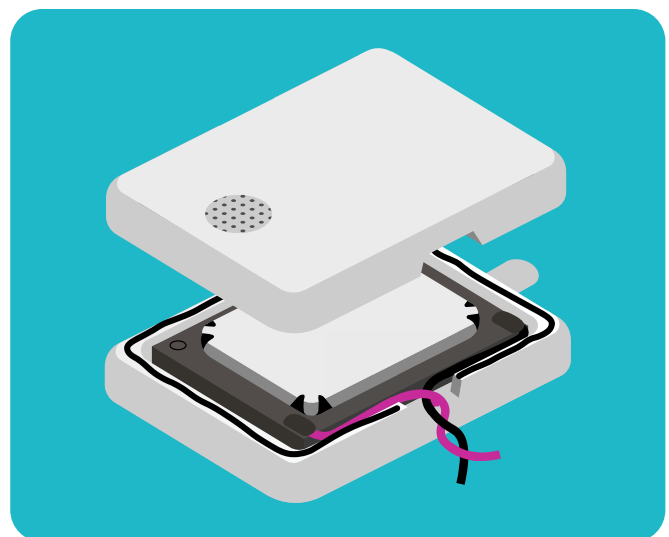
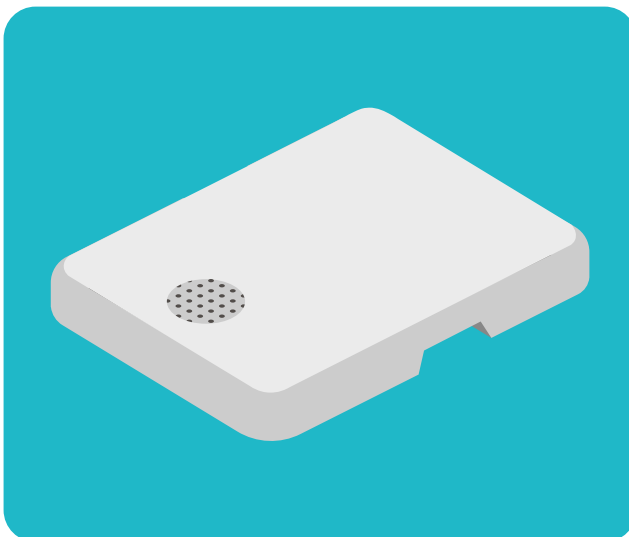
Apply glue on the edge of the front box*

**a needle tip is recommended for glue application but not required. Please be cautious with glue application to ensure no excess ends up on the speaker diaphragm because this can impact speaker performance.*



STEP 7

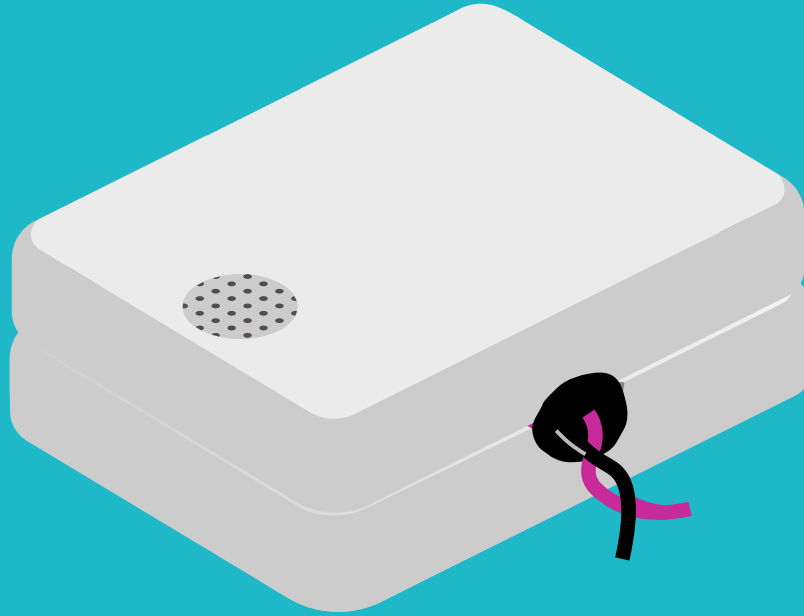
Assemble the front and back box



STEP 8

Apply glue to the hole of the speaker box enclosure*

**the final assembly should be airtight where glue is applied because any leaks can impact performance. It is also important to ensure that no glue contacts the enclosure's rear vent.*



COMPLETED ASSEMBLY!

