

Product Change Notice (PCN)

Date: 04/26/2023

PCN Number: PCN-0450017R-01

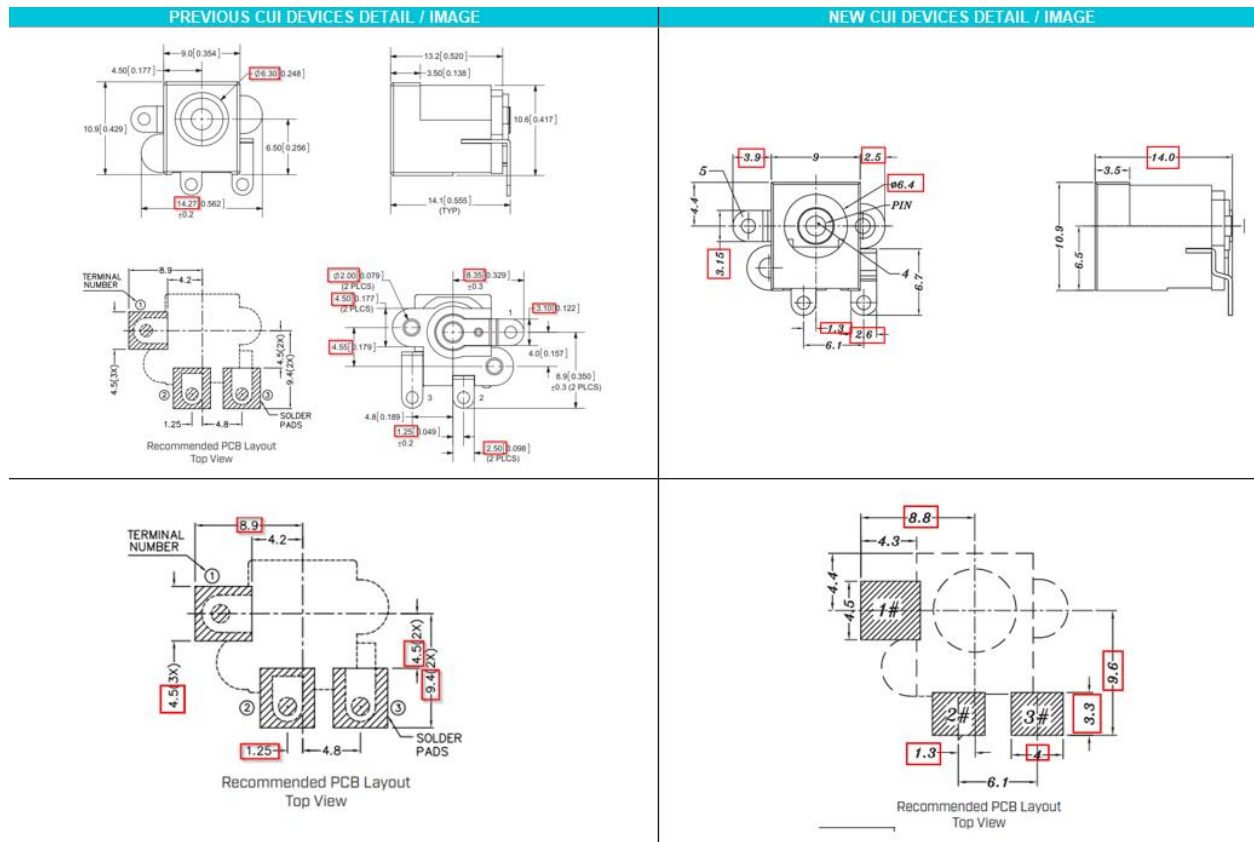
To Our Customers:

We appreciate your use of our products. Our commitment in maintaining and improving processes is demonstrated by plans to enhance our product quality, reliability, and manufacturability. The purpose of this notice is to inform you of a product change.

Product(s) Affected: *PJ-070AH-SMT-TR*

Reason(s) for Change: *Manufacturing process improvements*

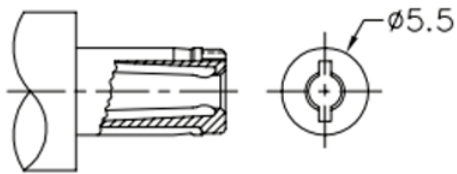
Description of Change: *Housing and footprint differences. Material Change on the housing and terminals. See image Below*



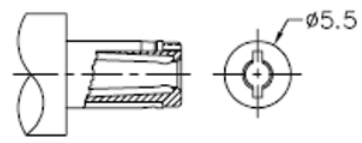
F-723-001

Revision: A

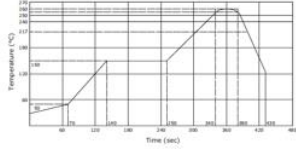
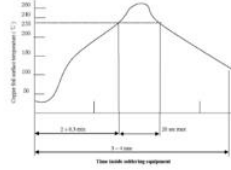
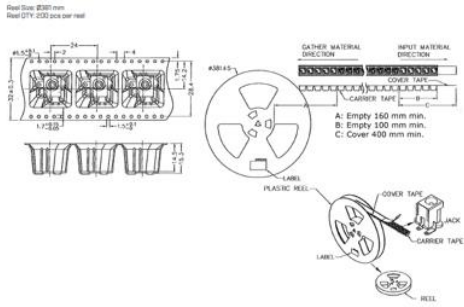
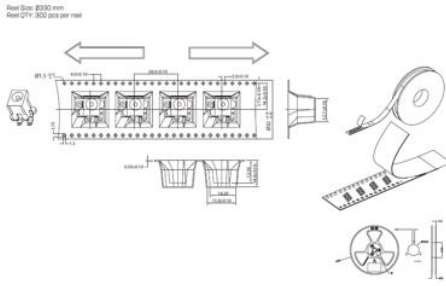
| PREVIOUS CUI DEVICES DETAIL / IMAGE | | | NEW CUI DEVICES DETAIL / IMAGE | | |
|-------------------------------------|--------------------|---------|--------------------------------|----------------|---------------|
| | MATERIAL | PLATING | DESCRIPTION | MATERIAL | PLATING/COLOR |
| center pin | brass | nickel | center pin | brass | nickel |
| terminal 1 | brass | silver | terminal 1 | brass | silver |
| terminal 2 | copper alloy | silver | terminal 2 | bronze | silver |
| terminal 3 | brass | silver | terminal 3 | brass | silver |
| plastic | PA6T or equivalent | | housing | LCP (UL94V-0) | black |
| | | | cover | PA9T (UL94V-0) | black |



MATING PLUG
Jack Insertion Depth: 8.9 mm



MATING PLUG
Jack Insertion Depth: 8.3 mm

| PREVIOUS CUI DEVICES DETAIL / IMAGE | | | | | NEW CUI DEVICES DETAIL / IMAGE | | | | | | | | | | | | | | | | | | | | | | | | | | | | | | | | | | | | | | | | | | | | | | | | | | | | |
|--|--|-----|-----|-----|--|------------------------|-----|-----|-----|-------|--------------|--|--|--|----|--------------------|-------------------------------|--------------------|-----|-----|-----|--------------------|--------------------------------|--|--|--|--|--|---|--|--|--|--|-----------|------------------------|-----|-----|-----|-------|--------------|---|--|--|--|--------------------|-------------------------------|--------------------|--|--|-----|--------------------|-------------------|--|--|--|--|--|
| <p>SOLDERABILITY</p> <table border="1"> <thead> <tr> <th>parameter</th> <th>conditions/description</th> <th>min</th> <th>typ</th> <th>max</th> <th>units</th> </tr> </thead> <tbody> <tr> <td>reel storage</td> <td>at relative humidity <math>< 80\%</math></td> <td></td> <td></td> <td>40</td> <td>$^{\circ}\text{C}$</td> </tr> <tr> <td>reflow soldering¹</td> <td>see reflow profile</td> <td>255</td> <td>260</td> <td>265</td> <td>$^{\circ}\text{C}$</td> </tr> <tr> <td>drying conditions²</td> <td>parts in reel: bake at $40\pm 5^{\circ}\text{C}$ for 72 hours parts removed from reel: bake at $40\pm 5^{\circ}\text{C}$ for 10 hours</td> <td></td> <td></td> <td></td> <td></td> </tr> </tbody> </table> <p>Note: 1. Must reflow solder within 72 hours from opening vacuum packaging at a temperature $> 30^{\circ}\text{C}$ & relative humidity $< 80\%$. 2. When exceeding top 90 to > 170 hours.</p>  | | | | | parameter | conditions/description | min | typ | max | units | reel storage | at relative humidity <math>< 80\%</math> | | | 40 | $^{\circ}\text{C}$ | reflow soldering ¹ | see reflow profile | 255 | 260 | 265 | $^{\circ}\text{C}$ | drying conditions ² | parts in reel: bake at $40\pm 5^{\circ}\text{C}$ for 72 hours parts removed from reel: bake at $40\pm 5^{\circ}\text{C}$ for 10 hours | | | | | <p>SOLDERABILITY</p> <table border="1"> <thead> <tr> <th>parameter</th> <th>conditions/description</th> <th>min</th> <th>typ</th> <th>max</th> <th>units</th> </tr> </thead> <tbody> <tr> <td>reel storage</td> <td>$< 30^{\circ}\text{C}$, $\leq 80\%$ humidity</td> <td></td> <td></td> <td></td> <td>$^{\circ}\text{C}$</td> </tr> <tr> <td>reflow soldering¹</td> <td>see reflow profile</td> <td></td> <td></td> <td>260</td> <td>$^{\circ}\text{C}$</td> </tr> <tr> <td>drying conditions</td> <td>parts in reel: bake at $40\pm 5^{\circ}\text{C}$ for 72 hours parts removed from reel: bake at $40\pm 5^{\circ}\text{C}$ for 10 hours</td> <td></td> <td></td> <td></td> <td></td> </tr> </tbody> </table> <p>Note: 1. CUI Devices recommends to solder within 72 hours from opening vacuum packaging at a temperature $> 30^{\circ}\text{C}$ & relative humidity $< 80\%$.</p>  | | | | | parameter | conditions/description | min | typ | max | units | reel storage | $< 30^{\circ}\text{C}$, $\leq 80\%$ humidity | | | | $^{\circ}\text{C}$ | reflow soldering ¹ | see reflow profile | | | 260 | $^{\circ}\text{C}$ | drying conditions | parts in reel: bake at $40\pm 5^{\circ}\text{C}$ for 72 hours parts removed from reel: bake at $40\pm 5^{\circ}\text{C}$ for 10 hours | | | | |
| parameter | conditions/description | min | typ | max | units | | | | | | | | | | | | | | | | | | | | | | | | | | | | | | | | | | | | | | | | | | | | | | | | | | | | |
| reel storage | at relative humidity <math>< 80\%</math> | | | 40 | $^{\circ}\text{C}$ | | | | | | | | | | | | | | | | | | | | | | | | | | | | | | | | | | | | | | | | | | | | | | | | | | | | |
| reflow soldering ¹ | see reflow profile | 255 | 260 | 265 | $^{\circ}\text{C}$ | | | | | | | | | | | | | | | | | | | | | | | | | | | | | | | | | | | | | | | | | | | | | | | | | | | | |
| drying conditions ² | parts in reel: bake at $40\pm 5^{\circ}\text{C}$ for 72 hours parts removed from reel: bake at $40\pm 5^{\circ}\text{C}$ for 10 hours | | | | | | | | | | | | | | | | | | | | | | | | | | | | | | | | | | | | | | | | | | | | | | | | | | | | | | | | |
| parameter | conditions/description | min | typ | max | units | | | | | | | | | | | | | | | | | | | | | | | | | | | | | | | | | | | | | | | | | | | | | | | | | | | | |
| reel storage | $< 30^{\circ}\text{C}$, $\leq 80\%$ humidity | | | | $^{\circ}\text{C}$ | | | | | | | | | | | | | | | | | | | | | | | | | | | | | | | | | | | | | | | | | | | | | | | | | | | | |
| reflow soldering ¹ | see reflow profile | | | 260 | $^{\circ}\text{C}$ | | | | | | | | | | | | | | | | | | | | | | | | | | | | | | | | | | | | | | | | | | | | | | | | | | | | |
| drying conditions | parts in reel: bake at $40\pm 5^{\circ}\text{C}$ for 72 hours parts removed from reel: bake at $40\pm 5^{\circ}\text{C}$ for 10 hours | | | | | | | | | | | | | | | | | | | | | | | | | | | | | | | | | | | | | | | | | | | | | | | | | | | | | | | | |
|  <p>Reel Size: Ø300 mm Reel QTY: 250 pcs per reel</p> <p>Labels: LABEL, PLASTIC REEL, CARRIER TAPE, GATHER MATERIAL DIRECTION, INPUT MATERIAL DIRECTION, COVER TAPE, LABEL, PLASTIC REEL, CARRIER TAPE, LABEL, REEL.</p> <p>A: Empty 160 mm min. B: Empty 100 mm min. C: Cover 400 mm min.</p> | | | | |  <p>Reel Size: Ø300 mm Reel QTY: 300 pcs per reel</p> | | | | | | | | | | | | | | | | | | | | | | | | | | | | | | | | | | | | | | | | | | | | | | | | | | | | |

Affected Date Code: **04/18/2023**

Product Availability: **Pertaining to market availability**

PCN Approval:

Operations/Quality



Product Management

